

Meadway Raynes Park, SW20 9HY

£750,000 Freehold



This lovely **THREE DOUBLE BEDROOM**, un-extended 1930's "Blay" Mid Terrace House is located on a desirable cul de sac and has a superb 48ft South Facing rear garden. Perfectly located for access to Raynes Park Station, High Street and the open space of Cannon Hill Common. An excellent blank canvas for an incoming buyer to move into and finish/extend (s.t.p.p) to their own desired tastes. There is also a driveway to the front, two spacious reception rooms, a neutrally decorated kitchen, separate w.c and family bathroom. Offered to the market with no onward chain.



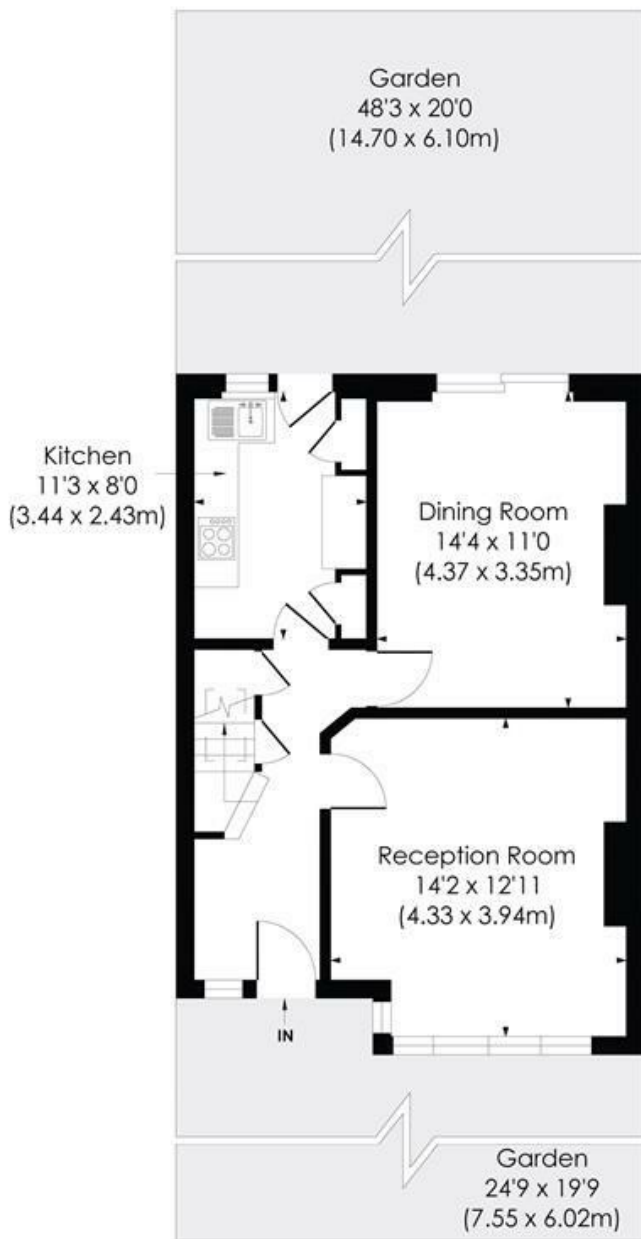
Although these particulars are believed to be correct, their accuracy is not guaranteed and they do not form part of any contract.

**Celebrating 30 years
of successful Sales and
Lettings in Merton**

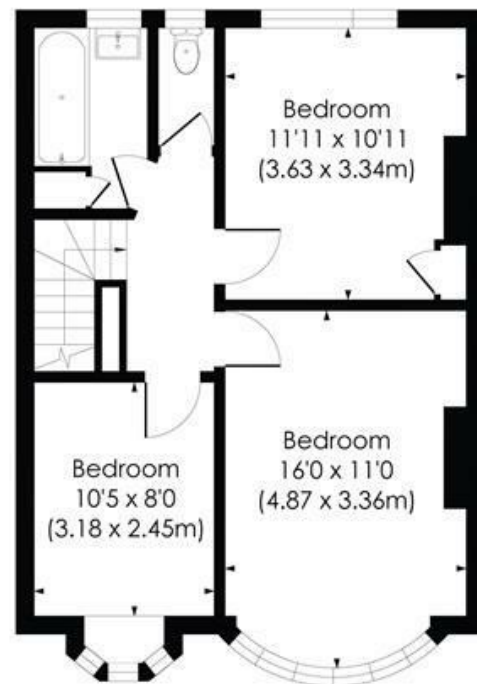


MEADWAY, SW20

Approx. Gross Internal Floor Area
1052 Sq. ft/97.72 Sq. m

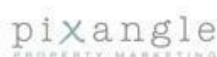


GROUND FLOOR

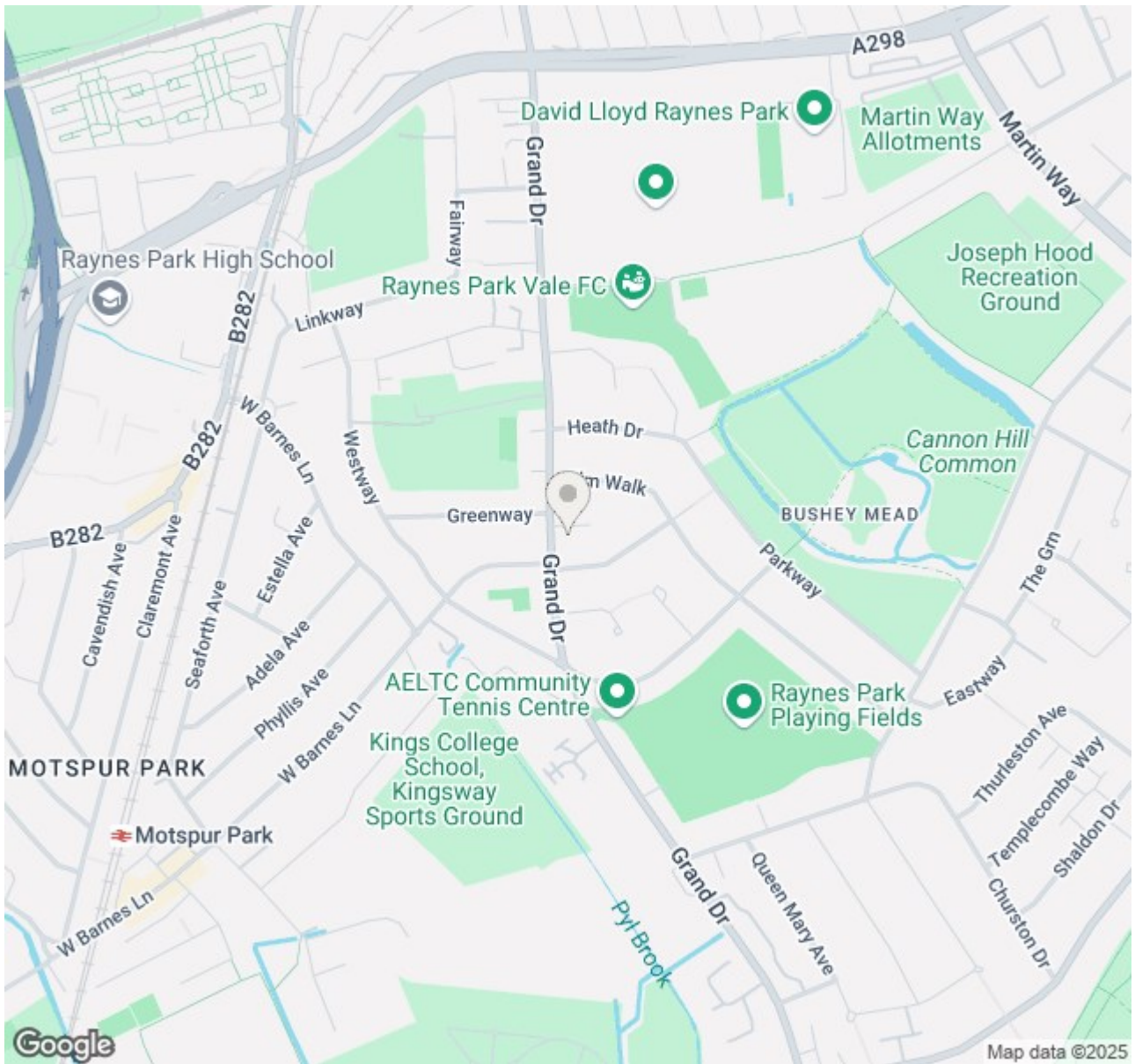


FIRST FLOOR

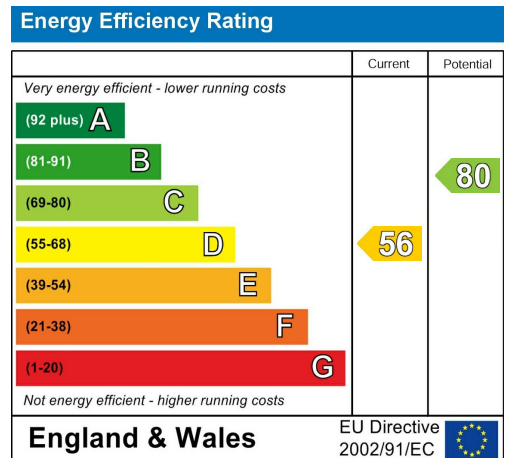
© Pixangle Property Marketing Ltd. info@pixangle.com Tel: 0208 870 2118



This floor plan has been prepared for the purpose of illustration only in accordance with the latest RICS code of measuring practice and is not to scale. All measurements and areas are approximate and whilst every effort has been made to ensure the accuracy of the plan contained here, no responsibility is taken for any error, omission or misstatement.



- Three Double Bedroom
- 1930's Mid Terrace "Blay" House
- Off Street Parking to Front
- Potential To Extend S.T.P.P
- Easy Access to Raynes Park Station and High Street
- Well Maintained Throughout
- South Facing Rear Garden
- No Onward Chain
- EPC - D
- Council Tax Band - D



For Free Mortgage Quote and Best Mortgage Rates, call Ellisons Mortgage Advisor on 0208 944 9595



Although these particulars are believed to be correct, their accuracy is not guaranteed and they do not form part of any contract.

Celebrating 30 years of successful Sales and Lettings in Merton

